

Appendix F – Specific Venue Emergency Plans

- 1. Jack Trice Stadium**
- 2. Stark Performance Center – Bergstrom Building**
- 3. Stark Performance Center – Olsen Olympic Sports Training Area**
- 4. Johnny Majors Football Practice Fields**
- 5. Bergstrom Indoor Football Practice Facility**
- 6. Hilton Coliseum**
- 7. Beyer Hall**
- 8. Lied Recreation/Athletic Center**
- 9. Forker Building**
- 10. Cyclone Sports Complex (Soccer/Track and Field)**
- 11. Cyclone Sports Complex (Softball)**
- 12. ISU Cross Country Course**
- 13. McKee Indoor Tennis Complex**
- 14. Sukup Basketball Practice Facility**
- 15. LifeTime Fitness Center (Des Moines)**
- 16. ISU Golf Performance Center**

Estimated distance approximately 2.6 miles

- Team Physicians (home sideline)
- Certified Athletic Trainer(s) (home sideline)
- Athletic Training Students
(home and visitor's sidelines)
- Primary EMT/ambulance crew
[Field – Home Sideline]
Ambulance (northeast end of stadium)
- Secondary EMT/ambulance crew
[Spectators] (side of stadium concourse)

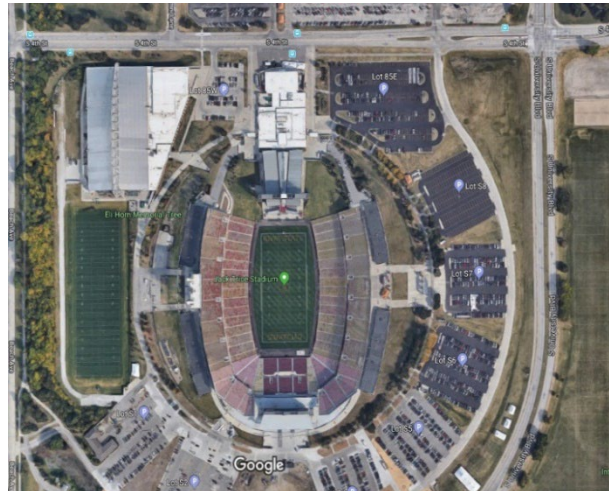
- EMS: 911; ISU Public Safety: 515-294-4428
- Call Primary Option is to use Two-Way Radios for direct communication with EMS
- Call Secondary Option is to use Designated Athletic Trainer's Mobile phone
 - -Mobile call will connect with Iowa State Police in Des Moines

Banyan STAT Kit
Bloodborne pathogen supplies (personal protection,
containers, and cleaning)
Blankets
Cervical collar
Crutches
FM Extractor, Screw Driver, Helmet Quick Release Device
Fluoroscanner (Cyclone Athletic Health Care Center)
Automatic External Defibrillator (AED)

Immobilizers (assorted types and sizes), SAM Splints
Sports Medicine Emergency Vehicle w/Spine Board and
scoop stretcher

John Deere Gator with Player Transport Seat
Two-way radios
Cold Tubs (Cyclone Athletic Health Care Center)
Vacuum splints
Bag-Valve-Mask apparatus
Manual Suction Device

1. Immediate care of the injured or ill student-athlete.
2. Emergency Equipment Retrieval
3. Activation of Emergency Medical System (EMS)
 - a. Assess and stabilize injured student-athlete as necessary
 - b. Communication with EMS personnel.
 - c. Direct the EMS to the injured student-athlete
 - d. One sports medicine staff member will accompany the student-athlete to the hospital in the ambulance
4. The sports medicine staff, coaching staff, officials, and game security staff must maintain scene control and keep bystanders at a distance.
5. On site Lead Athletic Trainer will complete post incident documentation.



Stark Performance Center – Bergstrom Building

1822 South 4th Street

Ames, IA 50011

GPS Coordinates: 42°0'57"N; 93°38'14"W

EMS Access thru North SPC Atrium Entrance (Football) gained from SPC North parking lot.

Estimated time to hospital approximately 6 minutes

Estimated distance approximately 2.5 miles

Emergency Personnel

- Team Physicians (full contact practice)
- Certified Athletic Trainer(s)
- Athletic Training Students

Emergency Communication

- EMS: 911; ISU Public Safety: 515-294-4428
- Call Primary Option is to use Two-Way Radios for direct communication with EMS
- Call Secondary Option is to use Designated Athletic Trainer's Mobile phone
 - -Mobile call will connect with Iowa State Police in Des Moines

Emergency Equipment

Banyan STAT Kit

Bloodborne pathogen supplies (personal protection, containers, and cleaning)

Blankets

Cervical collar

Crutches

FM Extractor, Screw Driver, Helmet Quick Release Device

Fluoroscan (Cyclone Athletic Health Care Center)

Automatic External Defibrillator (AED)

Immobilizers (assorted types and sizes), SAM Splints

Sports Medicine Emergency Vehicle w/Spine Board and scoop stretcher

John Deere Gator with Player Transport Seat

Two-way radios

Cold Tubs (Cyclone Athletic Health Care Center)

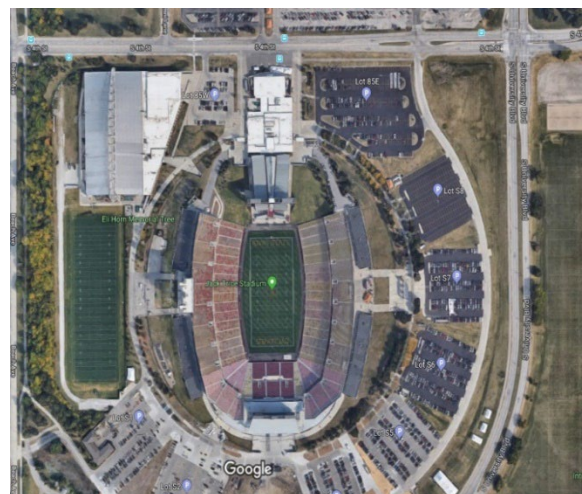
Vacuum splints

Bag-Valve-Mask apparatus

Manual Suction Device

Role of Sports Medicine Staff

1. Immediate care of the injured or ill student-athlete.
2. Emergency equipment retrieval
3. Activation of Emergency Medical System (EMS)
 - a. Assess and stabilize injured student-athlete as necessary
 - b. Communication through appropriate devices with EMT personnel
 - c. Direct the EMT/ambulance crew to the injured student-athlete
 - d. One sports medicine staff member will accompany the student-athlete to the hospital in the ambulance
4. The sports medicine staff, coaching staff, and Department of Public Safety (DPS) must maintain scene control and keep unessential personnel away from scene.
5. On site Lead Athletic Trainer will complete post incident documentation.



Stark Performance Center – Olsen Olympic Sports Area

1822 South 4th Street

Ames, IA 50011

GPS Coordinates: 42°0'56"N; 93°38'11"W

**EMS Access thru Main SPC Atrium Entrance gained from SPC North parking lot. Take
Elevators to Lower Level**

Estimated time to hospital approximately 6 minutes

Estimated distance approximately 2.5 miles

Emergency Personnel

- Team Physicians (full contact practice)
- Certified Athletic Trainer(s)
- Athletic Training Students

Emergency Communication

- EMS: 911; ISU Public Safety: 515-294-4428
- Call Primary Option is to use Two-Way Radios for direct communication with EMS
- Call Secondary Option is to use Designated Athletic Trainer's Mobile phone
 - -Mobile call will connect with Iowa State Police in Des Moines

Emergency Equipment

Banyan STAT Kit

Bloodborne pathogen supplies (personal protection, containers, and cleaning)

Blankets

Cervical collar

Crutches

FM Extractor, Screw Driver, Helmet Quick Release Device

Fluoroscan (Cyclone Athletic Health Care Center)

Automatic External Defibrillator (AED)

Immobilizers (assorted types and sizes), SAM Splints

Sports Medicine Emergency Vehicle w/Spine Board and scoop stretcher

John Deere Gator with Player Transport Seat

Two-way radios

Cold Tubs (Cyclone Athletic Health Care Center)

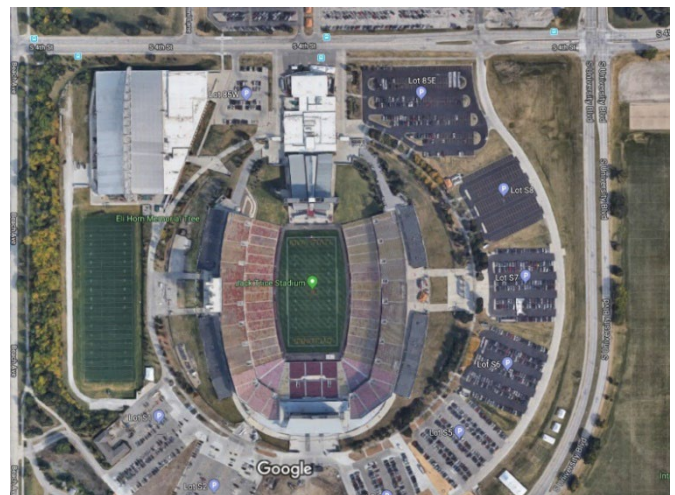
Vacuum splints

Bag-Valve-Mask apparatus

Manual Suction Device

Role of Sports Medicine Staff

1. Immediate care of the injured or ill student-athlete.
2. Emergency equipment retrieval
3. Activation of Emergency Medical System (EMS)
 - a. Assess and stabilize injured student-athlete as necessary
 - b. Communication through appropriate devices with EMT personnel
 - c. Direct the EMT/ambulance crew to the injured student-athlete
 - d. One sports medicine staff member will accompany the student-athlete to the hospital in the ambulance
4. The sports medicine staff, coaching staff, and Department of Public Safety (DPS) must maintain scene control and keep unessential personnel away from scene.
5. On site Lead Athletic Trainer will complete post incident documentation.



Johnny Majors Practice Facility

1822 South 4th Street

Ames, IA 50011

GPS Coordinates: 42°0'53"N; 93°38'18"W

**EMS Access thru South Entrance from South 16th
Street by Reimann Gardens.**

Estimated time to hospital approximately 6 minutes

Estimated distance approximately 2.5 miles

Emergency Personnel

- Team Physicians (full contact practice)
- Certified Athletic Trainer(s)
- Athletic Training Students

Emergency Communication

- EMS: 911; ISU Public Safety: 515-294-4428
- Call Secondary Option is to use Designated Athletic Trainer's Mobile phone
 - -Mobile call will connect with Iowa State Police in Des Moines

Emergency Equipment

Banyan STAT Kit

Bloodborne pathogen supplies (personal protection, containers, and cleaning)

Blankets

Cervical collar

Crutches

FM Extractor, Screw Driver, Helmet Quick Release Device

Fluoroscanner (Cyclone Athletic Health Care Center)

Automatic External Defibrillator (AED)

Immobilizers (assorted types and sizes), SAM Splints

Sports Medicine Emergency Vehicle w/Spine Board and scoop stretcher

John Deere Gator with Player Transport Seat

Two-way radios

Cold Tubs (Cyclone Athletic Health Care Center)

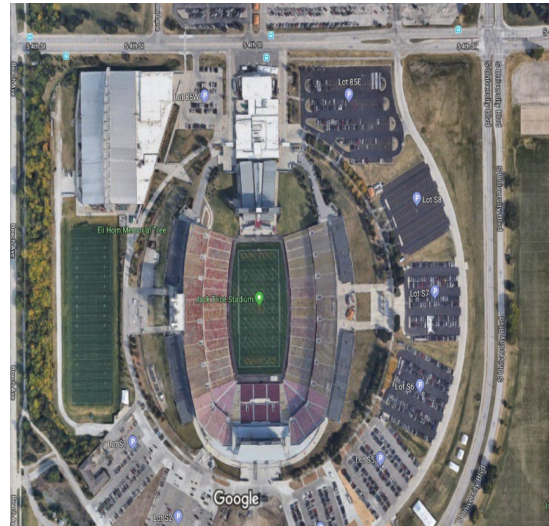
Vacuum splints

Bag-Valve-Mask apparatus

Manual Suction Device

Role of Sports Medicine Staff

1. Immediate care of the injured or ill student-athlete.
2. Emergency equipment retrieval
3. Activation of Emergency Medical System (EMS)
4. Assess and stabilize injured student-athlete as necessary
5. Communication through appropriate devices with EMT personnel
6. Direct the EMT/ambulance crew to the injured student-athlete
7. One sports medicine staff member will accompany the student-athlete to the hospital in the ambulance.
8. One sports medicine staff member will accompany the student-athlete to the hospital in the ambulance
9. The sports medicine staff, coaching staff, and Department of Public Safety (DPS) must maintain scene control and keep unessential personnel away from scene.
10. On site Lead Athletic Trainer will complete post incident documentation.



Bergstrom Indoor Football Practice Facility

1822 South 4th Street

Ames, IA 50011

GPS Coordinates: 42°0'58N; 93°38'16"W

EMS Access thru North Entrance gained from South 4th Street North lot, take sidewalk along north side of building.

Estimated time to hospital approximately 6 minutes

Estimated distance approximately 2.5 miles

Emergency Personnel

- Team Physicians (full contact practice)
- Certified Athletic Trainer(s)
- Athletic Training Students

Emergency Communication

- EMS: 911; ISU Public Safety: 515-294-4428
- Call Primary Option is to use Two-Way Radios for direct communication with EMS
- Call Secondary Option is to use Designated Athletic Trainer's Mobile phone
 - -Mobile call will connect with Iowa State Police in Des Moines

Emergency Equipment

Banyan STAT Kit

Bloodborne pathogen supplies (personal protection, containers, and cleaning)

Blankets

Cervical collar

Crutches

FM Extractor, Screw Driver, Helmet Quick Release Device

Fluoroscanner (Cyclone Athletic Health Care Center)

Automatic External Defibrillator (AED)

Immobilizers (assorted types and sizes), SAM Splints

Sports Medicine Emergency Vehicle w/Spine Board and scoop stretcher

John Deere Gator with Player Transport Seat

Two-way radios

Cold Tubs (Cyclone Athletic Health Care Center)

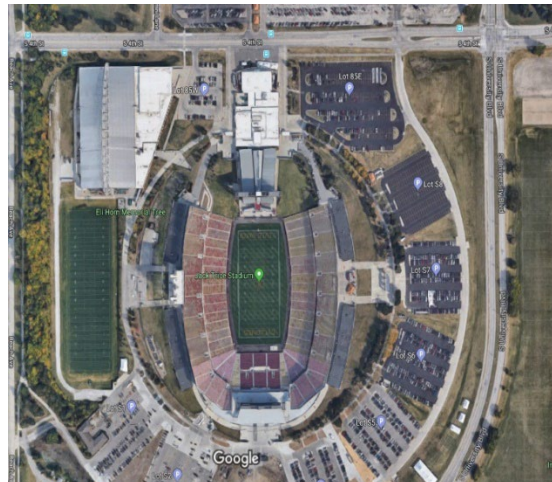
Vacuum splints

Bag-Valve-Mask apparatus

Manual Suction Device

Role of Sports Medicine Staff

11. Immediate care of the injured or ill student-athlete.
12. Emergency equipment retrieval
13. Activation of Emergency Medical System (EMS)
 - a. Assess and stabilize injured student-athlete as necessary
 - b. Communication through appropriate devices with EMT personnel
 - c. Direct the EMT/ambulance crew to the injured student-athlete
 - d. One sports medicine staff member will accompany the student-athlete to the hospital in the ambulance
14. The sports medicine staff, coaching staff, and Department of Public Safety (DPS) must maintain scene control and keep unessential personnel away from scene.
15. On site Lead Athletic Trainer will complete post incident documentation.



Hilton Coliseum

1705 Center Dr

Ames, IA 50011-1056

GPS Coordinates: 42°1'16"N; 93°38'1"W

EMS Access is at the intersection of Lincoln Way and University Drive. Access to the arena at the floor level may be gained through the ramp on the east side of the building.

Estimated time to hospital approximately 7 minutes

Estimated distance approximately 2.5 miles

Emergency Personnel

- Team Physician
- Certified Athletic Trainer
- Athletic Training Student(s)
- EMT/ambulance crew (basketball, wrestling, volleyball, and gymnastics)

Emergency Communication

- Telephone 294-8651 (Hilton Coliseum Training Room)
- Cellular phone (certified athletic trainers/team physician)

Emergency Equipment

Bloodborne pathogen supplies (personal protection, containers, and cleaning)

Blankets

Cervical collar

Crutches

Automatic External Defibrillator (AED)

Immobilizers (assorted types & sizes) and Wheel Chair

Spine board and scoop stretcher

Vacuum splints

Role of Sports Medicine Staff

1. Immediate care of the injured or ill student-athlete.
2. Emergency equipment retrieval.
3. Activation of Emergency Medical System (EMS):
 - a. Assess and stabilize injured student-athlete as necessary.
 - b. Communication through two-way radio from event management staff with EMT personnel (events only).
 - c. Obtain access to any gates or doors.
 - d. Direct the EMT/ambulance crew to the injured student-athlete.
 - e. One sports medicine staff member will accompany the student-athlete to the hospital in the ambulance.
4. The sports medicine staff, coaching staff, and Department of Public Safety (DPS) must maintain scene control and keep unessential personnel away from scene.
5. On site Lead Athletic Trainer will complete post incident documentation.



Beyer Hall

2625 Union Dr

GPS Coordinates: 42°1'33"N; 93°39'13"W

EMS Access is on Union Drive, between Sheldon Avenue and Bissell Road. Access to building may be gained from west door (street level at loading ramp). Primary elevator is just inside door to the left for access to 2nd floor and gymnastics area. Alternative elevator located in the southwest corner of the building near the main entrance off Union Drive.

Estimated time to hospital approximately 9 minutes

Estimated distance approximately 3.4 miles

Emergency Personnel

- Certified Athletic Trainer
- Athletic Training Student(s)

Emergency Communication

- Telephone 294-5146 (Beyer Hall Training Room)
- Telephone 294-5347 (Swimming Pool Deck)
- Telephone 294-3032 (Swimming Pool Office)
- Cellular phone (certified athletic trainers/team physician)

Emergency Equipment

Bloodborne pathogen supplies (personal protection, containers, and cleaning)

Blankets

Cervical collar

Crutches

Automatic External Defibrillator (AED)

Immobilizers (assorted types and sizes)

Spine board and scoop stretcher

Vacuum splints

Role of Sports Medicine Staff

1. Immediate care of the injured or ill student-athlete.
2. Emergency equipment retrieval.
3. Activation of Emergency Medical System (EMS)
 - a. Assess and stabilize injured student-athlete as necessary.
 - b. Communication through appropriate devices with EMT personnel.
 - c. Obtain access to any gates or doors.
 - d. Direct the EMT/ambulance crew to the injured student-athlete.
 - e. One sports medicine staff member will accompany the student-athlete to the hospital in the ambulance.
4. The sports medicine staff, coaching staff, and Department of Public Safety (DPS) must maintain scene control and keep unessential personnel away from scene.
5. On site Lead Athletic Trainer will complete post incident documentation.



Lied Recreation/Athletic Center

518 Beach Road

Ames, IA 50011-1430

GPS Coordinates: 42°1'34"N 93°38'15"W

EMS Access is located at 518 Beach Rd north of Lincoln Way. Access to the Lied Recreation Center should be gained through the overhead door on the west side of the building from parking lot 57.

Estimated time to hospital approximately 7 minutes

Estimated distance approximately 2.7 miles

Emergency Personnel

- Certified Athletic Trainers
- Athletic Training Student(s)
- Team Physician (Big 12 Conference and NCAA track meets)

Emergency Communication

- Cell phone 515-509-4208 (Tim Weesner)
- Cell phone 515-509-3343 (Tyler Patterson)
- Cell phone 609-760-7009 (Ryan Daniels)
- Telephone 294-7130 (Front Desk)
- Telephone 294-5998 (Strength and Conditioning)
- Cell phone (athletic training students/team physician)

Emergency Equipment

Bloodborne pathogen supplies (personal protection, containers, and cleaning)

Blankets

Cervical collar

Crutches

Automatic External Defibrillator (AED)

Immobilizers (assorted types and sizes)

Spine board

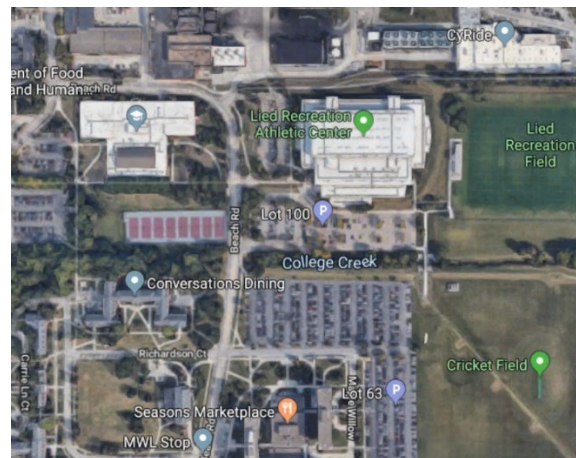
Scoop Stretcher

Two-way Radio (During meets)

Vacuum splints

Role of Sports Medicine Staff

1. Immediate care of the injured or ill student-athlete.
2. Emergency equipment retrieval
3. Activation of Emergency Medical System (EMS)
 - a. Assess and stabilize injured student-athlete as necessary
 - b. Communication through appropriate devices with EMT personnel
 - c. Obtain access to any gates or doors.
 - d. Direct the EMT/ambulance crew to the injured student-athlete
 - e. One sports medicine staff member will accompany the student-athlete to the hospital in the ambulance
4. The sports medicine staff, coaching staff, and Department of Public Safety (DPS) must maintain scene control and keep unessential personnel away from scene.
5. On site Lead Athletic Trainer will complete post incident documentation.



Forker Building

534 Wallace Road

Ames, IA 50011

GPS Coordinates: 42°1'35"N; 93°38'16"W

EMS Access is on Union Drive at the corner where Union Drive meets Wallace and Wilson Roads. Access to the building may be gained on the East side of the building off Beach Ave. This is a ground level access point. The tennis courts are located adjacent to the Forker Building on the south side. Access to the tennis courts may be gained via a gate on the north side of the courts.

Estimated time to hospital approximately 8 minutes

Emergency Personnel

- Certified Athletic Trainer
- Athletic Training Student(s)

Emergency Communication

- Cellular phone (certified athletic trainers/team physician)

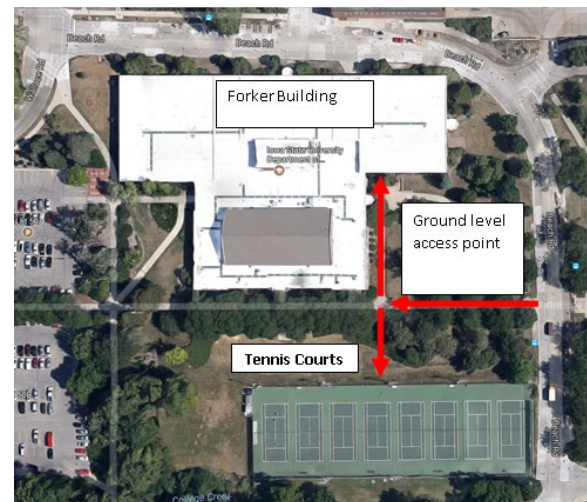
Emergency Equipment

Bloodborne pathogen supplies (personal protection, containers, and cleaning)
Scoop stretcher/board
Cervical collar

Crutches
Automatic External Defibrillator (AED)
Immobilizers (assorted types and sizes)
Vacuum splints

Role of Sports Medicine Staff

1. Immediate care of the injured or ill student-athlete.
2. Emergency equipment retrieval
3. Activation of Emergency Medical System (EMS)
 - a. Assess and stabilize injured student-athlete as necessary
 - b. Communication through appropriate devices with EMT personnel
 - c. Obtain access to any gates or doors.
 - d. Direct the EMT/ambulance crew to the injured student-athlete
 - e. One sports medicine staff member will accompany the student-athlete to the hospital in the ambulance
4. The sports medicine staff, coaching staff, and Department of Public Safety (DPS) must maintain scene control and keep unessential personnel away from scene.
5. On site Lead Athletic Trainer will complete post incident documentation.



Cyclone Sports Complex

1016 Welch Ave

Ames, IA 50011

GPS Coordinates: 42°0'37"N; 93°38'50"W

EMS Access is in the middle of the Cyclone Sports Complex on the East end of the campus-housing parking lot off Welch Avenue. Vehicle access point is through the two gates on the Northeast corner of the parking lot off the service road.

Estimated time to hospital approximately 11 minutes

Estimated distance approximately 3.8 miles

Emergency Personnel

- Coaching Staff (Track Practice)
- Certified Athletic Trainer (Track Practice, Soccer)
- Athletic Training Student(s)

Emergency Communication

- Cell phone 515-509-3343 (Tyler Patterson)
- Cell phone 609-760-7009 (Ryan Daniels)
- Cell phone 815-861-4566 (Jill Pohlman)
- Cell phone (athletic training students/team physician)

Emergency Equipment

Bloodborne pathogen supplies (personal protection, containers, and cleaning)

Crutches

Automatic External Defibrillator (AED)

Vacuum splints

Scoop Stretcher

Cold Tubs (Commercial and Machine Ice Available)

Role of Sports Medicine Staff

1. Immediate care of the injured or ill student-athlete.
2. Emergency equipment retrieval
3. Activation of Emergency Medical System (EMS)
 - a. Assess and stabilize injured student-athlete as necessary
 - b. Communication through appropriate devices with EMT personnel
 - c. Obtain access to any gates or doors.
 - d. Direct the EMT/ambulance crew to the injured student-athlete
 - e. One sports medicine staff member will accompany the student-athlete to the hospital in the ambulance
4. The sports medicine staff, coaching staff, and Department of Public Safety (DPS) must maintain scene control and keep unessential personnel away from scene.
5. On site Lead Athletic Trainer will complete post incident documentation.



1016 Welch Road
Ames, IA 50011

EMS Access is at the Southeast corner of the complex just off Mortensen Rd.
Vehicle access is through the first gate on the right (right field maintenance shed).

Estimated distance approximately 3.8 miles

- Certified Athletic Trainer
- Athletic Training Student(s)
- Coaching Staff

- Cellular phone 515-450-9207 (Kristin Lage, ATC)
- Cell phone (athletic training students/team physician)

Emergency Equipment

Bloodborne pathogen supplies (personal protection, containers, and cleaning)
Crutches

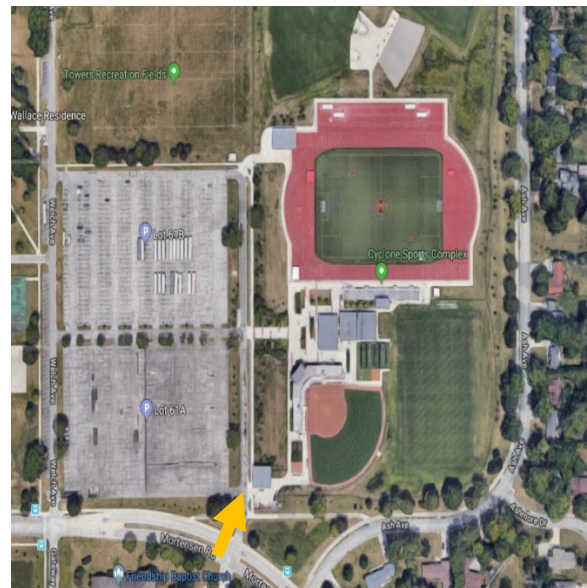
Automatic External Defibrillator (AED)

Vacuum splints

Cold Tub(s)

Role of Sports Medicine Staff

1. Immediate care of the injured or ill student-athlete.
2. Emergency equipment retrieval
3. Activation of Emergency Medical System (EMS)
 - a. Assess and stabilize injured student-athlete as necessary
 - b. Communication through appropriate devices with EMT personnel
 - c. Obtain access to any gates or doors.
 - d. Direct the EMT/ambulance crew to the injured student-athlete
 - e. One sports medicine staff member will accompany the student-athlete to the hospital in the ambulance
4. The sports medicine staff, coaching staff, and Department of Public Safety (DPS) must maintain scene control and keep unessential personnel away from scene.
5. On site Lead Athletic Trainer will complete post incident documentation.



Cross Country Course

1015 Hayward Ave

GPS Coordinates: 42°0'47"N; 93°39'6"W

EMS Access is at the corner of Mortensen Ave and Hayward Ave. Access gained to the area on Hayward Ave. Staff will meet EMS on the street.

Estimated time to hospital approximately 10 minutes

Estimated distance approximately 4.0 miles

Emergency Personnel

- Team Physician
(Big 12 Conference and NCAA meets only)
- Certified Athletic Trainer (2)
- Athletic Training Student(s)
- EMT/Ambulance Crew
(Big 12 Conference and NCAA meets only)

Emergency Communication

- Cell phone 515-509-3343 (Tyler Patterson)
- Cell phone 609-760-7009 (Ryan Daniels)
- Two-way radios (located throughout course and at medical tent)
- Cell phone (athletic training students/team physician)

Emergency Equipment

Bloodborne pathogen supplies (personal protection, containers, and cleaning)

Blankets

Cervical collar

Crutches

Automatic External Defibrillator (AED)

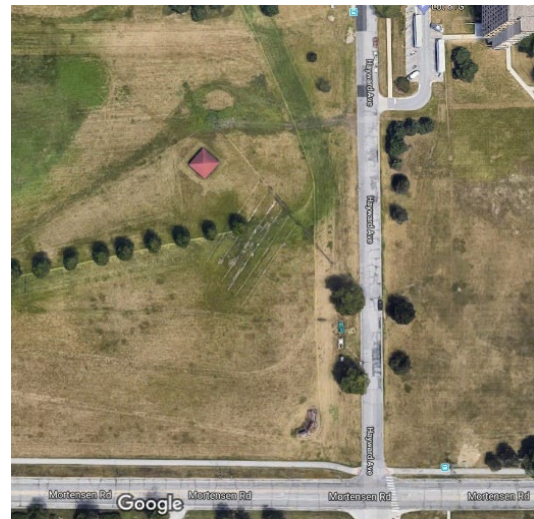
Immobilizers (assorted types and sizes)

John Deere Gator with Med-Bed or golf cart

Two-way radios, Vacuum splints

Role of Sports Medicine Staff

1. Immediate care of the injured or ill student-athlete.
2. Emergency equipment retrieval
3. Activation of Emergency Medical System (EMS)
 - a. Assess and stabilize injured student-athlete as necessary
 - b. Communication through appropriate devices with EMT personnel
 - c. Obtain access to any gates or doors.
 - d. Direct the EMT/ambulance crew to the injured student-athlete
 - e. One sports medicine staff member will accompany the student-athlete to the hospital in the ambulance
4. The sports medicine staff, coaching staff, and Department of Public Safety (DPS) must maintain scene control and keep unessential personnel away from scene.
5. On site Lead Athletic Trainer will complete post incident documentation.



McKee Indoor Tennis Complex

1025 South Dakota Ave

GPS Coordinates: 42°0'49"N; 93°40'47"W

EMS Access is via the parking lot entrance on the North side of the building from S. Dakota Ave.

Estimated time to hospital approximately 12 minutes

Estimated distance approximately 5.1 miles

Emergency Personnel

- Certified Athletic Trainer at Sukup BBPF
- Athletic Training Student(s) when available
- Coaching staff members with FA/CPR/AED certification

Emergency Communication

- Cellular phone (certified athletic trainers or Athletics Dept. personnel)
- Address: 1025 South Dakota Ave

Emergency Equipment

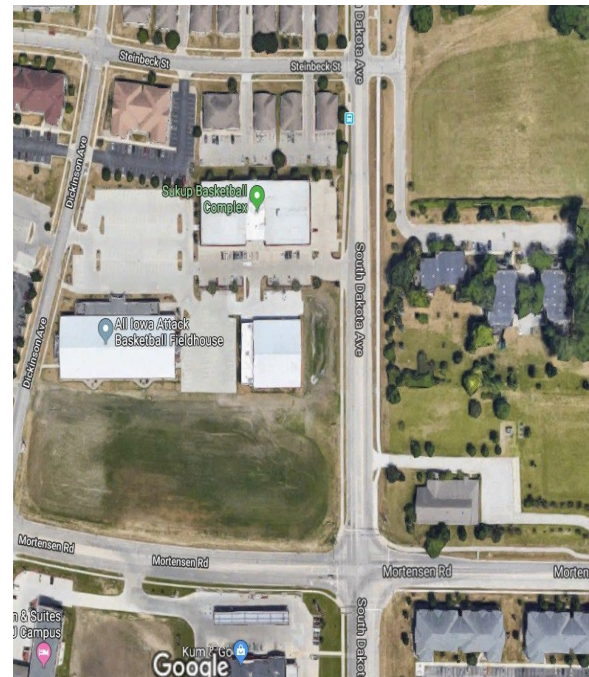
Bloodborne pathogen supplies (personal protection and clean up)

Crutches

AED – Main lobby near building entrance.

Role of Sports Medicine Staff

1. Immediate care of the injured or ill student-athlete.
2. Emergency equipment retrieval
3. Activation of Emergency Medical System (EMS)
 - a. Assess and stabilize injured student-athlete as necessary
 - b. Communication through appropriate devices with EMT personnel
 - c. Obtain access to any gates or doors.
 - d. Direct the EMT/ambulance crew to the injured student-athlete
 - e. One sports medicine staff member will accompany the student-athlete to the hospital in the ambulance
4. The sports medicine staff, coaching staff, and Department of Public Safety (DPS) must maintain scene control and keep unessential personnel away from scene.
5. On site Lead Athletic Trainer will complete post incident documentation.



Sukup Basketball Practice Facility

1011 South Dakota Avenue

Ames, IA 50011

GPS Coordinates: 42°0'50"N; 93°40'47"W

EMS Access is on west side of South Dakota just north of Mortensen. Access to the facility gained through entering the complex parking lot off South Dakota and entering the main doors.

Estimated time to hospital approximately 15 minutes

Estimated distance approximately 4.9 miles

Emergency Personnel

- Certified Athletic Trainer
- Athletic Training Student(s)
- Coaching staff members with FA/CPR/AED certification

Emergency Communication

- Telephone 294-7325 (Athletic Training office)
- Cellular phone (certified athletic trainers or other Athletics Dept. personnel)
- Address: 1011 South Dakota Avenue

Emergency Equipment

Bloodborne pathogen supplies (personal protection, containers, and cleaning)

Blanket

Cervical collar

Crutches

Automatic External Defibrillator (AED) located in main lobby, west side

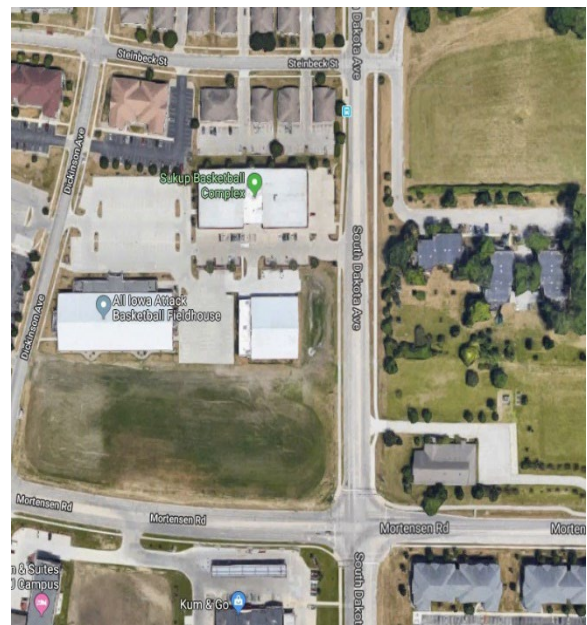
Immobilizers (assorted types and sizes)

Vacuum splints

Scoop stretcher and straps

Role of Sports Medicine Staff

1. Immediate care of the injured or ill student-athlete.
2. Emergency equipment retrieval
3. Activation of Emergency Medical System (EMS)
 - a. Assess and stabilize injured student-athlete as necessary
 - b. Communication through appropriate devices with EMT personnel
 - c. Obtain access to any gates or doors.
 - d. Direct the EMT/ambulance crew to the injured student-athlete
 - e. One sports medicine staff member will accompany the student-athlete to the hospital in the ambulance
4. The sports medicine staff, coaching staff, and Department of Public Safety (DPS) must maintain scene control and keep unessential personnel away from scene.
5. On site Lead Athletic Trainer will complete post incident documentation



Lifetime Fitness

11911 Hickman Road

Urbandale, IA

GPS Coordinates:

EMS Access is on the north side of Hickman Road just west of I-35/I-80. Vehicle access point is through the two gates on the Northeast corner of the parking lot off the service road. Access to the facility may be gained through entering the complex parking lot off of Hickman Road and entering through the doors on the east side of the facility.

Estimated time to hospital approximately 6 minutes

Estimated distance approximately 2.1 miles

Emergency Personnel

- Certified Athletic Trainer
- Athletic Training Student(s)
- Coaching staff members with FA/CPR/AED certification

Emergency Communication

- Telephone (515) 362-3500 (Lifetime Fitness landline)
- Cellular phone (certified athletic trainers)
- Address: 11911 Hickman Rd, Urbandale IA 50323

Emergency Equipment

Bloodborne pathogen supplies (personal protection, containers, and cleaning)
Crutches

Vacuum splints
Automatic External Defibrillator (AED)- located in center viewing area near tennis desk

Role of Sports Medicine Staff

1. Immediate care of the injured or ill student-athlete.
2. Emergency equipment retrieval
3. Activation of Emergency Medical System (EMS)
 - a. Assess and stabilize injured student-athlete as necessary
 - b. Communication through appropriate devices with EMT personnel
 - c. Obtain access to any gates or doors.
 - d. Direct the EMT/ambulance crew to the injured student-athlete
 - e. One sports medicine staff member will accompany the student-athlete to the hospital in the ambulance
4. The sports medicine staff, coaching staff, Lifetime Fitness employees, and Department of Public Safety (DPS) must maintain scene control and keep unessential personnel away from scene.
5. On site Lead Athletic Trainer will complete post incident documentation.



Golf Performance Center

South US 69

Ames, IA

GPS Coordinates:

EMS Access is on the west side of US-69 just south of Timberline Road. Access to the facility may be gained by entering the doors on the east side of the facility.

Estimated time to hospital approximately 10- 12 minutes (Note this route does have a train crossing which may slow the arrival time)

Estimated distance approximately 4 miles

Emergency Personnel

Coaching staff members with FA/CPR/AED certification

Emergency Communication

- Mobile phone (Coaches or other athletic department personnel)
- Address: South U.S. 69

Emergency Equipment

Bloodborne pathogen supplies (personal protection and clean up)

AED – Main lobby near building entrance

Role of Sports Medicine Staff

1. Immediate care of the injured or ill student-athlete.
2. Emergency equipment retrieval
3. Activation of Emergency Medical System (EMS)
 - a. Assess and stabilize injured student-athlete as necessary
 - b. Communication through appropriate devices with EMT personnel
 - c. Obtain access to any gates or doors.
 - d. Direct the EMT/ambulance crew to the injured student-athlete
 - e. One staff member will accompany the student-athlete to the hospital in the ambulance
4. The sports medicine staff, coaching staff, and Department of Public Safety (DPS) must maintain scene control and keep unessential personnel away from scene.
5. On site Lead Athletic Trainer will complete post incident documentation.

